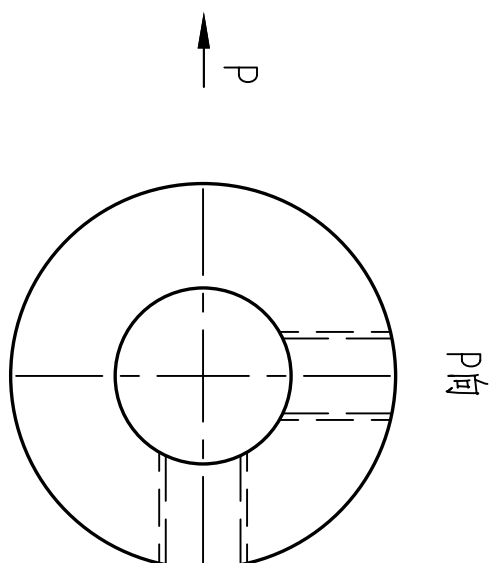
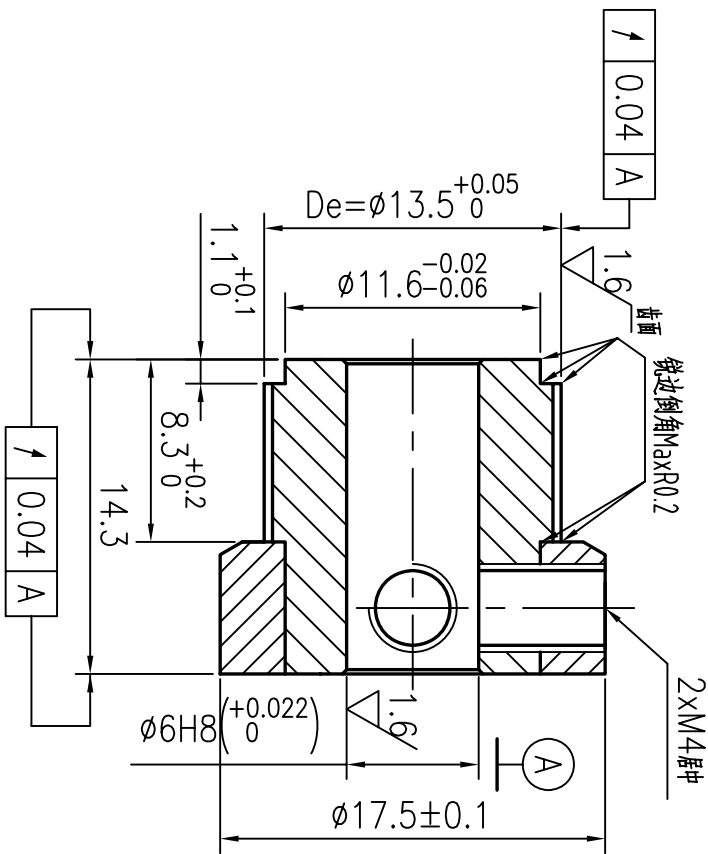
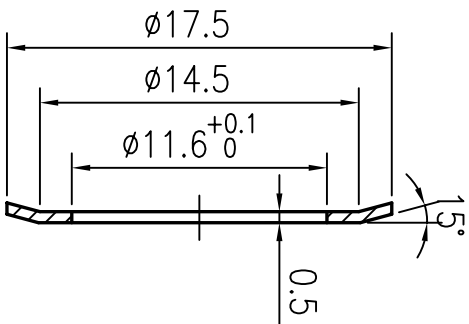


FLANGE 504#



3.2/ 其余

技术要求

- 1.未注倒角C0.2, 锐边倒钝去毛刺;
Unquoted chamfer C0.5, break sharp edges
- 2.各表面不得有划伤, 锈迹等缺陷;
All surfaces must be rust free and no scratch
- 3.未注尺寸公差按SO 2768-MK标准;
dimensions without tolerance according to 2768-MK
- 4.节距偏差:任意相邻两齿 ± 0.03 , 90度圆弧内累计偏差在 ± 0.1 内; Pitch tolerance: within ± 0.03 for any neighboring two teeth within ± 0.1 for 90° arch
- 5.产品打字, 装配紧定螺钉, Marking part No, Setscrews installed

| | | | | |
|----|-------|-------|----|----|
| 标记 | 从数 | 更改文件号 | 签字 | 日期 |
| 设计 | zhang | 标准化 | | |
| 审核 | huang | | | |
| 工艺 | | | | |

| | | | |
|----------|-----------|---|---|
| 名称/Name: | 同步轮 | | |
| 型号/Code: | GT2M, Z22 | | |
| 共 | 页 | 第 | 页 |

| | | | |
|---|---------------|--------|-----|
| 图号/Drawing No: | TRM4162_0 | 更新/Rev | |
| 材料/Material: | LY12(2024-T6) | 重量 | |
| | | 比例 | 3:1 |
|  Chengdu Leno Machinery Co., Ltd Tel: +86-28-65998825; Fax: +86-28-84862968 sales@cdleno.com; www.cdleno.com | | | |