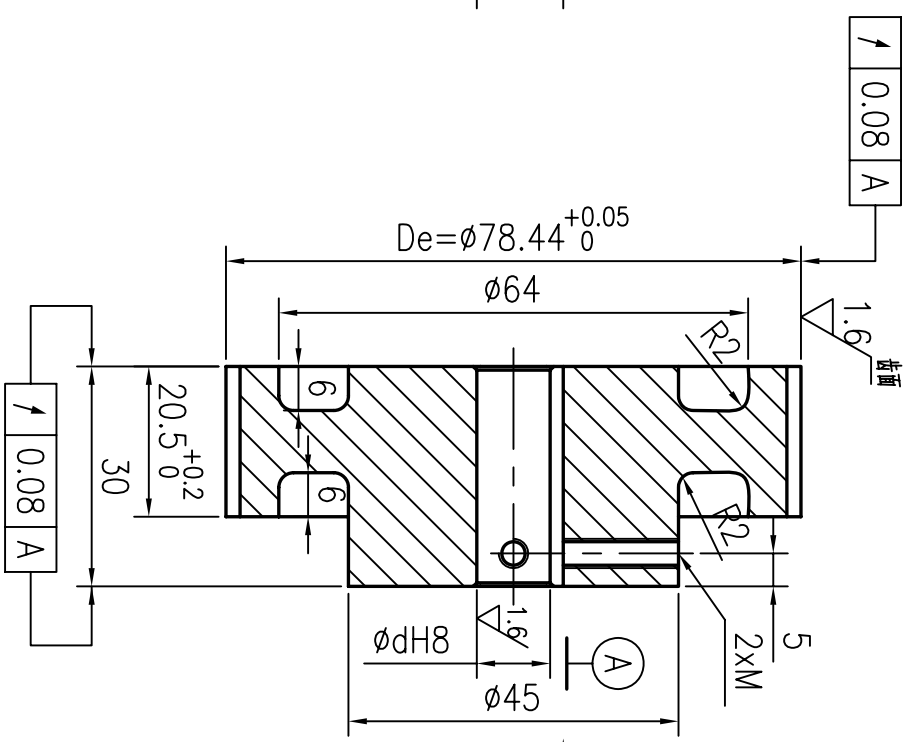


技术要求

- 1.未注倒角C0.5,锐边倒钝去毛刺;
Unquoted chamfer C0.5,break sharp edges
- 2.各表面不得有划伤,锈迹等缺陷;
All surfaces must be rust free and no scratch
- 3.未注尺寸公差按ISO 2768-MK标准;
dimensions without tolerance according to 2768-MK
- 4.节距偏差:任意相邻两齿 ± 0.03 ,90度圆弧内累计偏差在 ± 0.1 内;Pitch tolerance:within ± 0.03 for any neighboring two teeth within ± 0.1 for 90° arch
- 5.产品打字,装配固定螺钉;Marking part No, Setscrews installed



| 产品编号/Part No. | d | B | T | M |
|---------------|-----------------------------------|---------|-----------------------------------|----|
| TRM4115_0 | 9 ^{+0.027} ₀ | 3±0.012 | 10.4 ^{+0.1} ₀ | M3 |
| TRM4117_0 | 10 ^{+0.027} ₀ | 3±0.012 | 11.4 ^{+0.1} ₀ | M3 |
| TRM4119_0 | 11 ^{+0.033} ₀ | 4±0.015 | 12.8 ^{+0.1} ₀ | M4 |
| TRM4123_0 | 12 ^{+0.033} ₀ | 4±0.018 | 13.8 ^{+0.1} ₀ | M4 |
| TRM4126_0 | 14 ^{+0.027} ₀ | 5±0.015 | 16.3 ^{+0.1} ₀ | M5 |
| TRM4129_0 | 17 ^{+0.027} ₀ | 5±0.015 | 19.3 ^{+0.1} ₀ | M5 |
| TRM4131_0 | 19 ^{+0.033} ₀ | 6±0.015 | 21.8 ^{+0.1} ₀ | M6 |
| TRM4133_0 | 24 ^{+0.033} ₀ | 8±0.018 | 27.3 ^{+0.2} ₀ | M8 |

| | | | |
|----------------|-------|------------------|----|
| 名称/Name: | | 同步轮 | |
| 型号/Code: | | GTSM,Z50 | |
| 标记 | 从数 | 更改文件号 | 签字 |
| 设计 | zhang | 标准化 | 日期 |
| 审核 | huang | 日期 | |
| 工艺 | | 日期 | |
| 图号/Drawing No: | | TRM4115_0~4133_0 | |
| 材料/Material: | | LY12(2024-T6) | |
| 重量 | | 比例 | |
| | | 1:1 | |
| 更新/Rev | | | |

