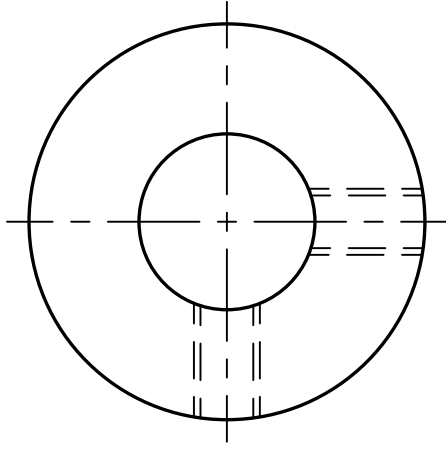
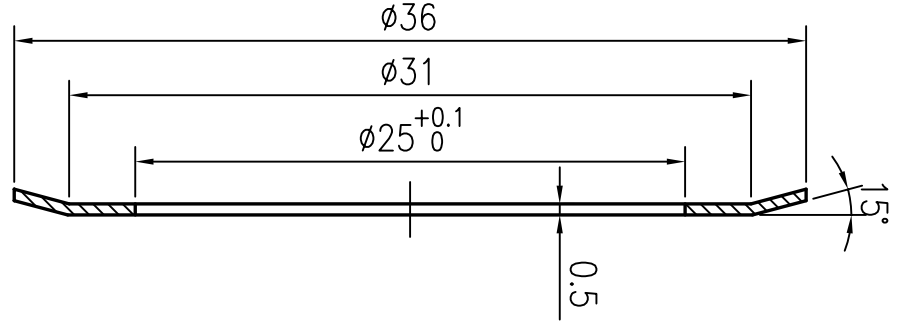


P向局部



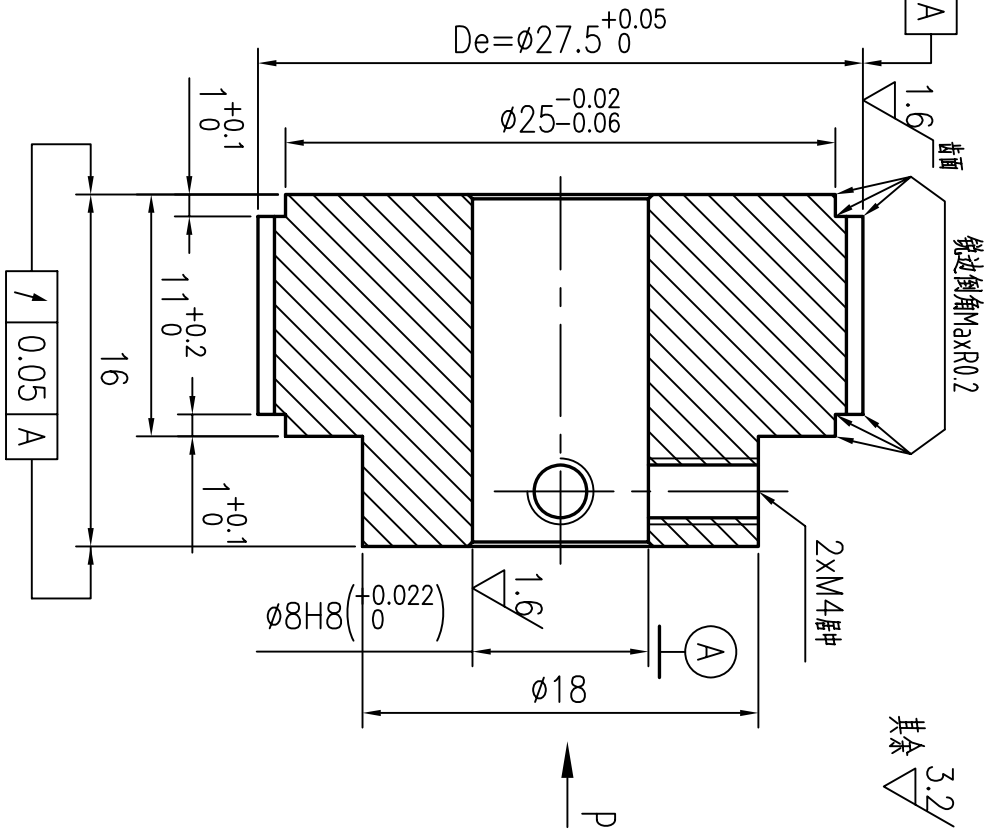
技术要求

- 1.未注倒角C0.2,锐边倒钝去毛刺,
Unquoted chamfer C0.5 break sharp edges
- 2.各表面不得有划伤,锈迹等缺陷;
All surfaces must be rust free and no scratch
- 3.未注尺寸公差按SO 2768-MK标准;
dimensions without tolerance according to 2768-MK
- 4.节距偏差:任意相邻两齿 ± 0.03 ,90度圆弧内累计偏差在 ± 0.1 内;Pitch tolerance:within ± 0.03 for any neighboring two teeth within ± 0.1 for 90° arch
- 5.产品打字,装配紧定螺钉,Marking part No, Setscrews installed



FLANGE 510#

1 0.05 A



其余 3.2

| | | | | |
|----|----|-------|----|----|
| 标记 | 从数 | 更改文件号 | 签字 | 日期 |
| 设计 | | zhang | | |
| 审核 | | huang | | |
| 工艺 | | | | |

| | | | |
|----------|----------|---|---|
| 名称/Name: | 同步轮 | | |
| 型号/Code: | GT2M,Z44 | | |
| 共 | 页 | 第 | 页 |

| | | | |
|---|---------------|--------|-----|
| 图号/Drawing No: | TRM4104_0 | 更新/Rev | |
| 材料/Material: | LY12(2024-T6) | 重量 | |
| | | 比例 | 3:1 |
| | | | |
| Chengdu Leno Machinery Co.Ltd Tel:+86-28-65998825; Fax:+86-28-84862968 sales@cdleno.com; www.cdleno.com | | | |