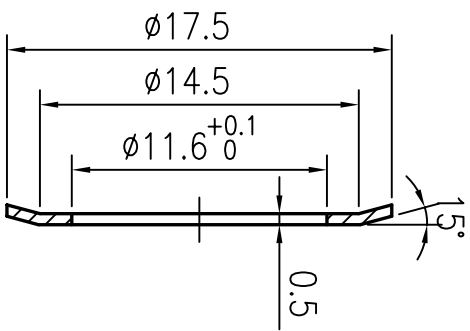


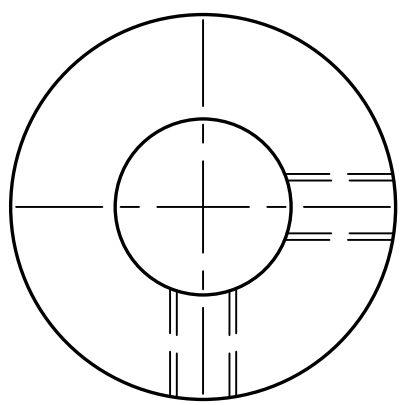
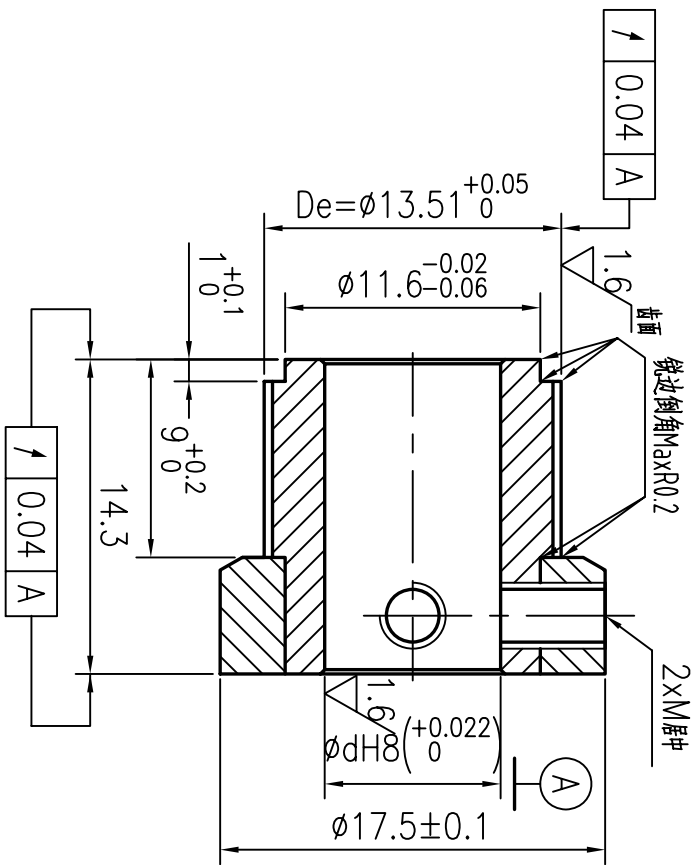
3.2/ 其余



FLANGE 504#

技术要求

- 1.未注倒角C0.2,锐边倒钝去毛刺;
- Unquoted chamfer C0.5,break sharp edges
- 2.各表面不得有划伤,锈迹等缺陷;
- All surfaces must be rust free and no scratch
- 3.未注尺寸公差按SO 2768-MK标准;
- dimensions without tolerance according to 2768-MK
- 4.节距偏差:任意相邻两齿 ± 0.03 ,90度圆弧内累计偏差在 ± 0.1 内;Pitch tolerance:within ± 0.03 for any neighboring two teeth within ± 0.1 for 90° arch
- 5.产品打字,装配紧定螺钉,Marking part No, Setscrews Installed




P向

产品编号/Part No.	d	M
TRM4101_0	6.35	6-40UNF
TRM4102_0	8	M4

标记	从数	更改文件号	签字	日期
设计	zhang	标准化	huang	日期
审核				
工艺				

名称/Name:	同步轮
型号/Code:	GT2M,Z22
共	页
第	页

图号/Drawing No:	TRM4101_0~4102_0	更新/Rev	
材料/Material:	LY12(2024-T6)	重量	
		比例	3:1
 Chengdu Leno Machinery Co.,Ltd Tel: +86-28-65998825; Fax: +86-28-84862968 sales@cdleno.com; www.cdleno.com			