



Application Note

| | |
|--------------|-----------------------------|
| CUSTOMER | ZW002 |
| PRODUCT NAME | 电源供应器/POWER SUPPLY |
| OUR P/N | |
| OUR MODEL NO | CGSW-1205000 |
| CUSTOMER NO | |
| STANDARD | EN60950 |
| RATING | I/P:AC100-240V 1.5A 50-60HZ |
| | O/P: DC12V 5000mA |
| | |
| REMARK | 美规/UL |
| | |
| REVISION | 00 |

| Yingyuan Electronics | | | |
|----------------------|------------|-------------|------------|
| DRAW BY | CHECKED BY | APPROVED BY | DATA |
| 李思人 | | | 2011-01-25 |

| CUSTOMER |
|----------|
| |

深圳市盈源电子有限公司

Shenzhen Yingyuan Electronics co.,Ltd

地址：中国深圳市宝安区西乡九围勒竹角鸿业工业园 3 栋

Address: ROOM 4,BLDG 3 JIU WEI LE ZHU JIAO NEW IND ZHONG XI XIANG
BAO AN SHEN ZHEN GUANGDONG CHINA

TEL: +86-0755-29785866 FAX: +86-0755-29785684 <http://www.szyingyuan.com>



INDEX

| | | |
|------|--|-------|
| 1.0 | INTRODUCTION..... | Page3 |
| 2.0 | INPUT REQUIREMENTS..... | Page3 |
| 3.0 | OUTPUT REQUIREMENTS..... | Page3 |
| 4.0 | PERFORMANCE SPEC | Page4 |
| 5.0 | PROTECTION REQUIREMENTS..... | Page4 |
| 6.0 | ENVIRONMENTAL..... | Page4 |
| 7.0 | SAFETY REQUIREMENTS AND CERTIFICATION..... | Page4 |
| 7.1 | Regulatory Standard..... | Page5 |
| 7.2 | Dielectric withstand (Hi-pot) test..... | Page5 |
| 7.3 | Insulation..... | Page5 |
| 8.0 | APPEARANCE DRAWING..... | Page6 |
| 9.0 | NAME PLATE..... | Page7 |
| 10.0 | BOX DRAWING..... | Page8 |

1.0 INTRODUCTION

This specification defines the performance characteristics for a class 2 adapter, single-phase watt.single output level power supply

- ◆ Very low standby power achieved
- ◆ Over load Latch-Off protection during either(a)specified power threshold requirements or(b)Shot circuit condition
- ◆ Reliability level or 50000 hours MTBF& 0.5% annual field failure rate@25°C

2.0 INPUT REQUIREMENTS

- ◆ AC Input voltage rating 100Vac to 240Vac
- ◆ AC Input voltage range 90Vac to 254Vac
- ◆ AC Input frequency range 47Hz to 63Hz
- ◆ Max. In-rush current 30A for 100Vac at full load
75A for 240Vac at full load
- ◆ Input current 1.5A Max @ 90V/60Hz full load
- ◆ Standby power 0.5W Max @ 254V/50Hz no load

3.0 OUTPUT REQUIREMENTS

- ◆ Output voltage +12V
- ◆ Output voltage tolerance +/-0.6V
- ◆ Min load current 0 mA
- ◆ Max load current 5000mA



- ◆Line regulation +/-1%
- ◆load regulation +/-5%
- ◆Ripple & Noise 120mVp-p (max)

DC-20MHz/Ripple and Noise is measured on output connector with 20MHz oscilloscope bandwidth differentially with a 10uF electrolytic and 0.1uF ceramic capacitors across output

4.0 PERFORMANCE SPEC

- ◆Total output power 60W typical
- ◆Efficiency 75% min@100~240Vac50/60Hz with full load
- ◆Hold up time 10m sec.min.@ 100Vac/60Hz with full load
- ◆Turn on delay time 3sec.max.@ 100Vac/60Hz with full load
- ◆Switching frequency 65K Hz typical

5.0 PROTECTION FEATURE

- ◆ Over-voltage protection Output shut down when output voltage exceeds
- ◆ Over-current protection Output shut down(Auto restart)when output voltage exceeds
- ◆ Short circuit protection Output shut down(Auto restart)
- ◆ Over-temperature protection output shut down when case face temperature exceeds 65°C

6.0 ENVIRONMENTAL

- ◆ Operation temperature -20°C to +40°C
- ◆ Operation humidity 20% to 90% R.H.
- ◆ Storage temperature -20°C to +75°C
- ◆ Storage humidity 0% to 90% R.H.

7.0 SAFETY REQUIREMENTS AND CERTIFICATION

7.1 Regulatory Standard

- ◆ The power supply shall complied the following international regulatory standards

| For short | country | Certified Status | Standard |
|-----------|-----------|------------------|-----------------|
| CE | Europe/欧洲 | approval | EN60950/EN55022 |
| FCC | USA/美国 | approval | FCC part 15 |
| | | | |
| | | | |
| | | | |

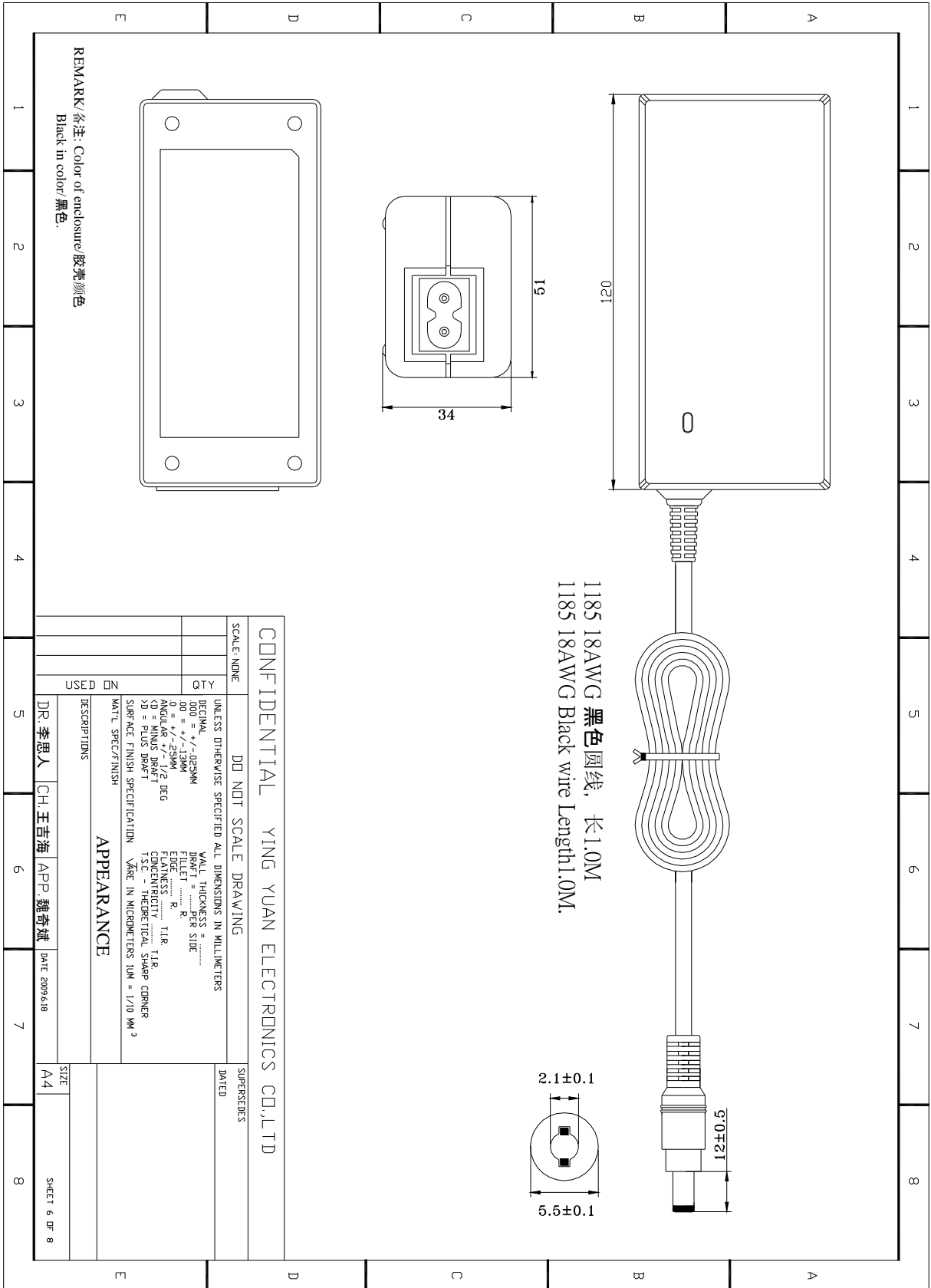
7.2 Dielectric withstand (Hi-pot) test

- ◆ Input to output 3000Vac 10mA /min

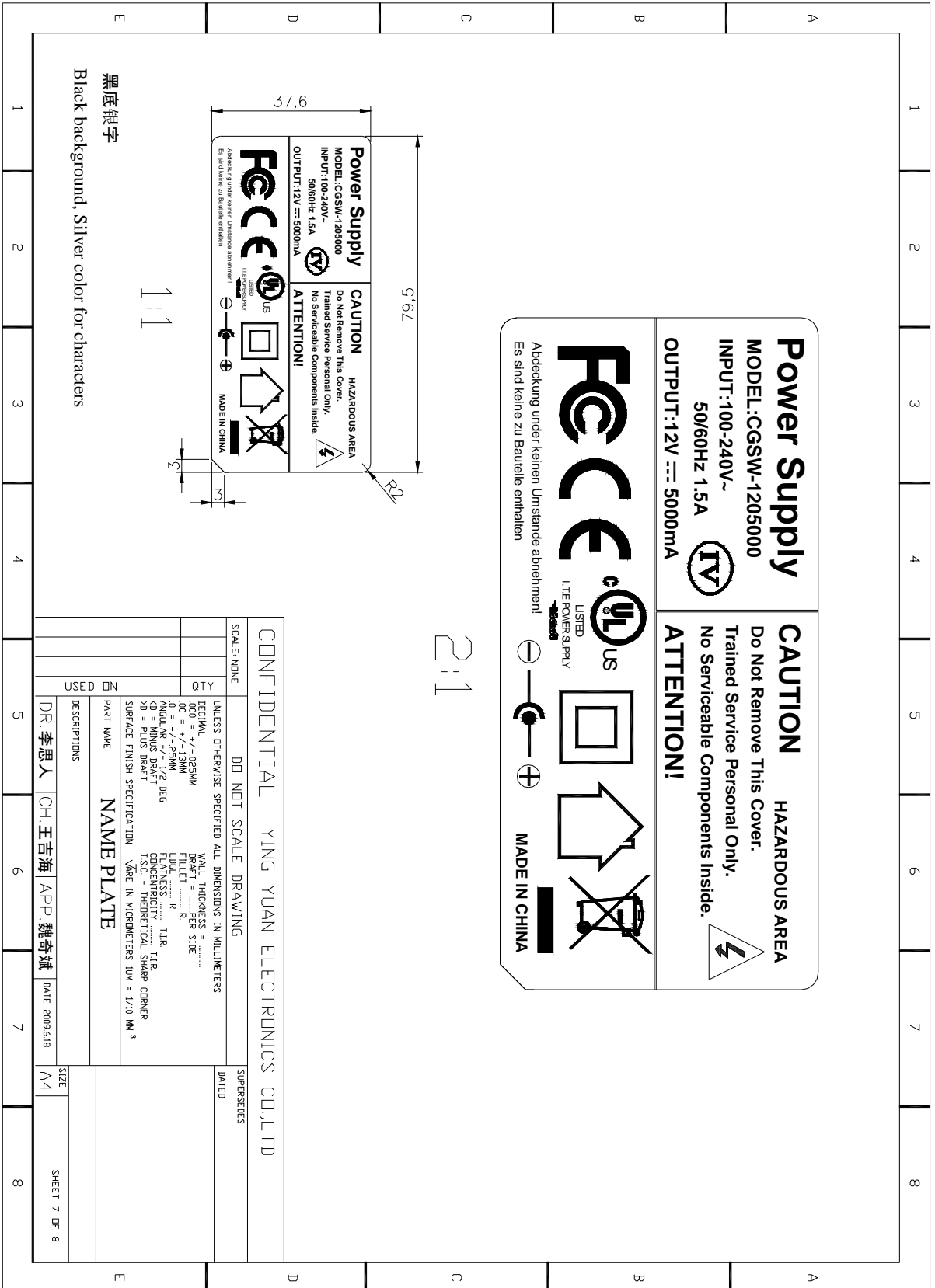
7.3 Insulation

- ◆ Input to output DC 500V 10M ohm min

8.0 APPEARANCE DRAWIN

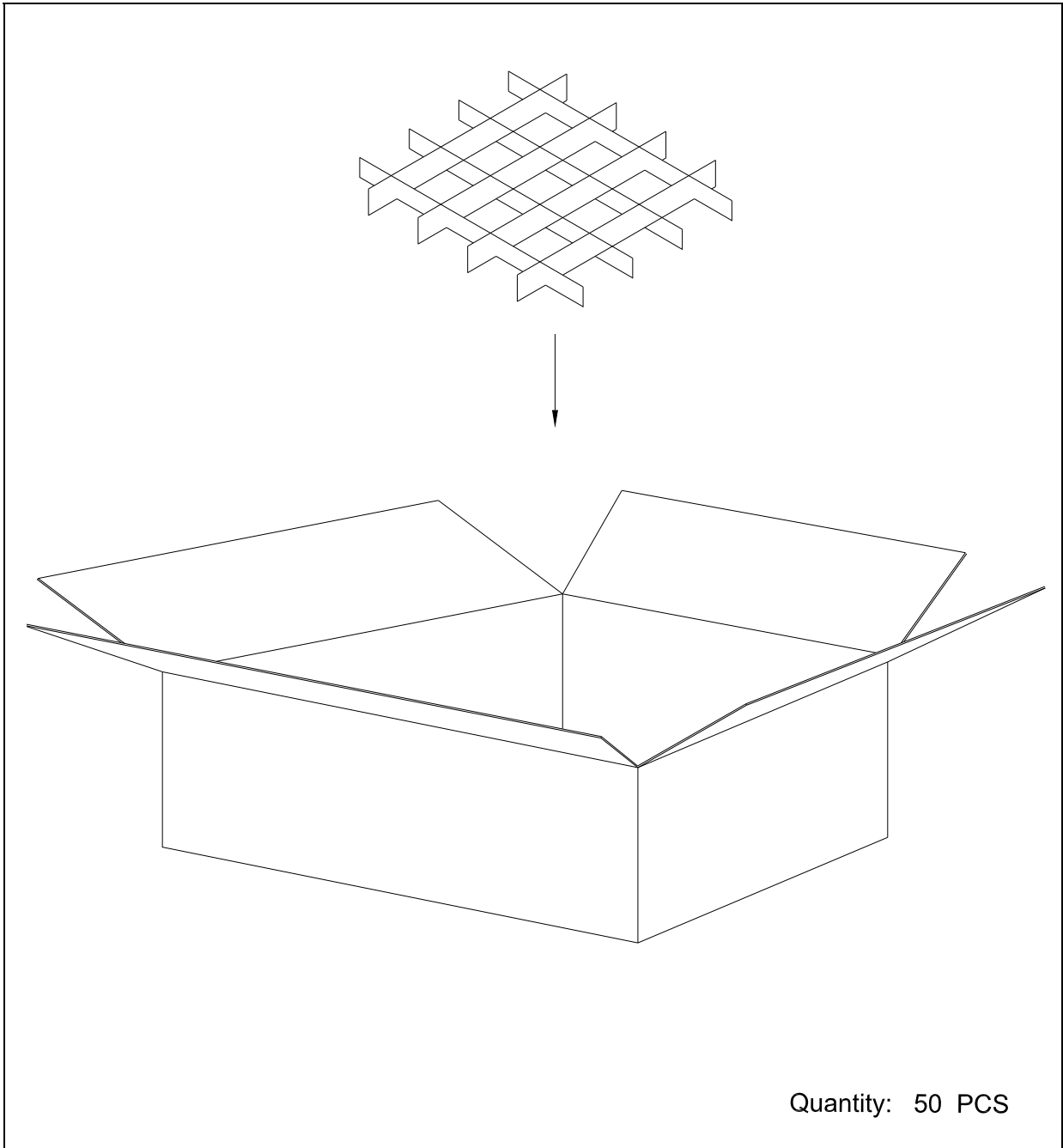


9.0 NAMEPLATE





10.0 BOX DRAWING



Quantity: 50 PCS

| 客户修改内容 / Customer modify | 修改人/日期 Signature/date |
|--------------------------|-----------------------|
| | |