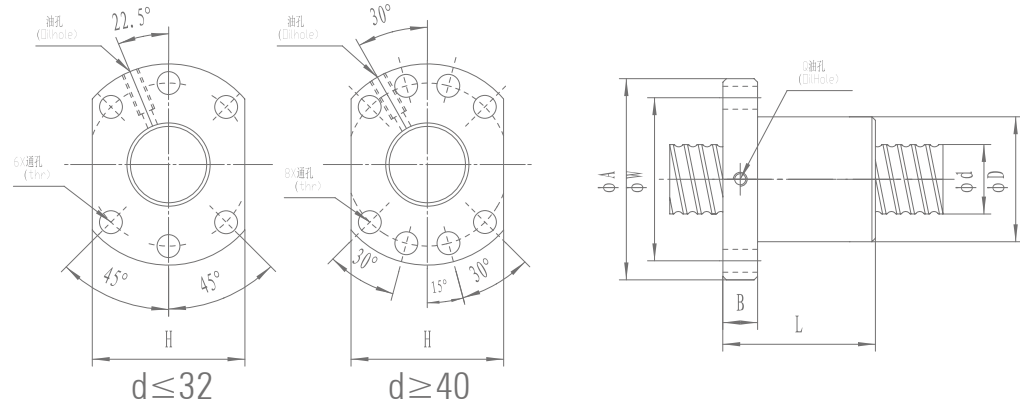


SFU

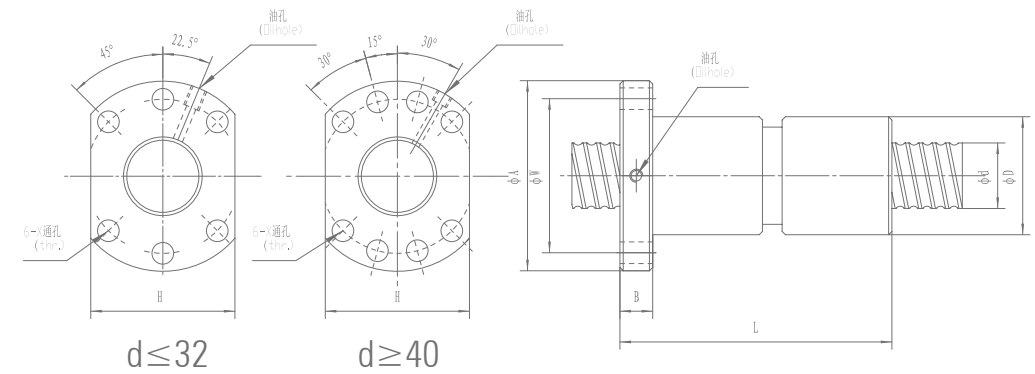


● I: 導程 Lead Da: 珠徑 Ball Dia. n: 珠卷數 Number of Circuits K: 剛性 Stiffness (Kgf/μm)
Ca: 動額定負荷 Basic Dynamic Rating Load (Kgf) Coa: 靜額定負荷 Basic Static Rating Load (Kgf)

型号 Part Number	滾珠螺桿、螺帽之基準數據 Dimensions																
	d	I	Da	D	A	B	L	W	X	H	Q	n	Ca	Coa	K	Coa	K
SFU01204-4	12	4	2.5	24	40	10	40	32	4.5	30		4	593	1129	12.5	1340	35
SFU01604-4	16	4	2.381	28	48	10	40	38	5.5	40	M6	4	629	1270	35	1790	36
SFU01605-4	16	5	3.175	28	48	10	50	38	5.5	40	M6	4	780	1790	20	1480	41
SFU01610-3	16	10	3.175	28	48	10	57	38	5.5	40	M6	3	721	1249	15	2380	45
SFU02004-4	20	4	2.381	36	58	10	42	47	6.6	44	M6	4	699	1617	41	1950	48
SFU02005-4	25	5	3.175	36	58	10	51	47	6.6	44	M6	4	1130	2380	25	3110	63
SFU02504-4	25	4	2.381	40	62	10	42	51	6.6	48	M6	4	777	2052	48	3877	65
SFU02505-4	25	5	3.175	40	62	10	51	51	6.6	48	M6	4	1280	3110	35	3050	56
SFU02506-4	25	6	3.969	40	62	10	54	51	6.6	48	M6	4	1528	3284	40	4150	72
SFU02508-4	25	8	4.762	40	62	10	63	51	6.6	48	M6	4	1941	3863	38	7170	72
SFU02510-4	25	10	4.762	40	62	12	85	51	6.6	48	M6	4	1944	3877	33	5330	98
SFU03204-4	25	4	2.381	50	80	12	44	65	9	62	M6	4	871	2661	56	9520	90
SFU03205-4	32	5	3.175	50	80	12	52	65	9	62	M6	4	1450	4150	40	12500	117
SFU03206-4	32	6	3.969	50	80	12	57	65	9	62	M6	4	1720	4298	47	16600	114
SFU03208-4	32	8	4.762	50	80	12	65	65	9	62	M6	4	2189	5079	44	21300	162
SFU02005-4	40	5	3.175	36	58	10	51	47	6.6	44	M6	4	1130	2380	25	3110	63
SFU02504-4	40	4	2.381	40	62	10	42	51	6.6	48	M6	4	777	2052	48	3877	65
SFU02505-4	40	5	3.175	40	62	10	51	51	6.6	48	M6	4	1280	3110	35	3050	56
SFU02506-4	40	6	3.969	40	62	10	54	51	6.6	48	M6	4	1528	3284	40	4150	72
SFU02508-4	50	8	4.762	40	62	10	63	51	6.6	48	M6	4	1941	3863	38	7170	72
SFU02510-4	50	10	4.762	40	62	12	85	51	6.6	48	M6	4	1944	3877	33	5330	98
SFU03204-4	50	4	2.381	50	80	12	44	65	9	62	M6	4	871	2661	56	9520	90
SFU03205-4	63	5	3.175	50	80	12	52	65	9	62	M6	4	1450	4150	40	12500	117
SFU02508-4	80	8	4.762	40	62	10	63	51	6.6	48	M6	4	1941	3863	38	7170	72
SFU02510-4	80	10	4.762	40	62	12	85	51	6.6	48	M6	4	1944	3877	33	5330	98
SFU03204-4	80	4	2.381	50	80	12	44	65	9	62	M6	4	871	2661	56	9520	90
SFU02510-4	100	10	4.762	40	62	12	85	51	6.6	48	M6	4	1944	3877	33	5330	98

備註: 有標註★記號者可製作左螺紋 Note: with sign ★ can produce left helix

DFU



● I: 導程 Lead Da: 珠徑 Ball Dia. n: 珠卷數 Number of Circuits K: 剛性 Stiffness (Kgf/μm)
Ca: 動額定負荷 Basic Dynamic Rating Load (Kgf) Coa: 靜額定負荷 Basic Static Rating Load (Kgf)

型号 Part Number	滾珠螺桿、螺帽之基準數據 Dimensions																
	d	I	Da	D	A	B	L	W	X	H	Q	n	Ca	Coa	K	Coa	K
DFU01604-4	16	4	2.381	28	48	10	80	38	5.5	40	M6	4	629	1270	35	1340	36
DFU01605-4	16	5	3.175	28	48	10	100	38	5.5	40	M6	4	780	1790	20	1480	41
DFU01610-3	16	10	3.175	28	48	10	118	38	5.5	40	M6	3	721	1249	15	1480	45
DFU02004-4	20	4	2.381	36	58	10	80	47	6.6	44	M6	4	699	1617	41	2380	48
DFU02005-4	25	5	3.175	36	58	10	101	47	6.6	44	M6	4	1130	2380	25	1950	63
DFU02504-4	25	4	2.381	40	62	10	80	51	6.6	48	M6	4	777	2052	48	3110	65
DFU02505-4	25	5	3.175	40	62	10	101	51	6.6	48	M6	4	1280	3110	35	3877	56
DFU02506-4	25	6	3.969	40	62	10	105	51	6.6	48	M6	4	1528	3284	40	3050	72
DFU02508-4	25	8	4.762	40	62	10	120	51	6.6	48	M6	4	1941	3863	38	4150	72
DFU02510-4	32	10	4.762	40	62	12	145	51	6.6	48	M6	4	1944	3877	33	7170	98
DFU03204-4		4	2.381	50	80	12	80	65	9	62	M6	4	871	2661	56	5330	90
DFU03205-4	32	5	3.175	50	80	12	102	65	9	62	M6	4	1450	4150	40	9520	117
DFU03206-4	32	6	3.969	50	80	12	105	65	9	62	M6	4	1720	4298	47	12500	114
DFU03208-4	32	8	4.762	50	80	12	122	65	9	62	M6	4	2189	5079	44	16600	162
DFU03210-4	32	10	6.35	50	80	12	162	65	9	62	M6	4	3390	7170	79	21300	162
DFU04005-4	40	5	3.175	63	93	14	105	78	9	70	M8	4	1610	5330	49	3110	63
DFU04006-4	40	6	3.969	63	93	14	108	78	9	70	M6	4	1911	5458	55	3877	56
DFU04008-4	40	8	4.762	63	93	14	132	78	9	70	M6	4	2435	6469	52	3050	72
DFU04010-4	50	10	6.35	63	93	14	165	78	9	70	M8	4	3910	9520	50	4150	72
DFU05010-4	50	10	6.35	75	110	16	171	93	11	85	M8	4	4450	12500	65	7170	98
DFU05020-4	50	20	7.144	75	110	16	280	93	11	85	M8	4	4644	14327	59.5	5330	98
DFU06310-4	63	10	6.35	90	125	18	182	108	11	95	M8	4	5070	16600	80	9520	117
DFU06320-4	80	20	9.525	95	135	20	290	115	13.5	100	M8	4	7573	23860	84.1	12500	114
DFU08010-4	80	10	6.35	105	145	20	182	125	13.5	110	M8	4	5620	21300	90	7170	98
DFU08020-4	80	20	9.525	125	165	25	295	145	13.5	130	M8	4	8485	30895	84.1	5330	98
DFU10020-4	100	20	9.525	150	202	30	340	170	17.5	135	M8	4	9420	39183	300	9520	117

備註: 有標註★記號者可製作左螺紋 Note: with sign ★ can produce left helix

滾珠絲杠螺桿

滾珠絲杠螺桿