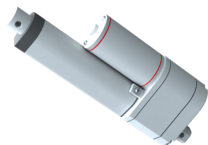


LINEAR ACTUATOR

LM-P5H



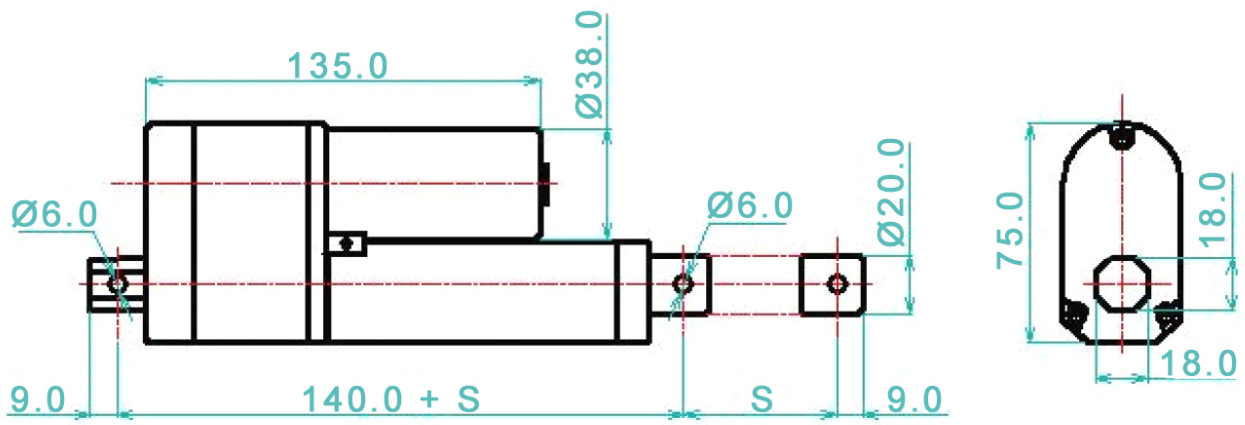
Main Spec:

Type	LM-P5H
Input	12/24VDC
load	300~900N 30~90KG 66~198LBS
Speed	5~29mm/s 0.24~1.16inch
Potentiometer (customize)	1KΩ,5KΩ,10KΩ
Limited switch	Built-in (not adjustable)
Duty cycle	10~15%
House	Aluminum Alloy
Inner tube	Aluminum Alloy
Stroke length(customize)	50,100,150,200,250,300mm,etc
Color	Grey/black
Operation temperature	-26℃ ~ +65℃
Safety certificate	CE

Spec:

Type	Load: N	Pull: N	Static load: N	Unload/load speed:MM/S	Duty cycle:%	Max current	
						12V	24V
P5H-6	900	750	950	6/4	15	5	2.5
P5H -10	750	600	750	10/7	15	4.8	2.4
P5H -16	600	500	500	16/9	15	4.4	2.2
P5H -20	450	400	400	20/14	15	4	2
P5H -24	350	300	300	24/16	10	4	2
P5H -29	300	200	250	29/21	10	4	2

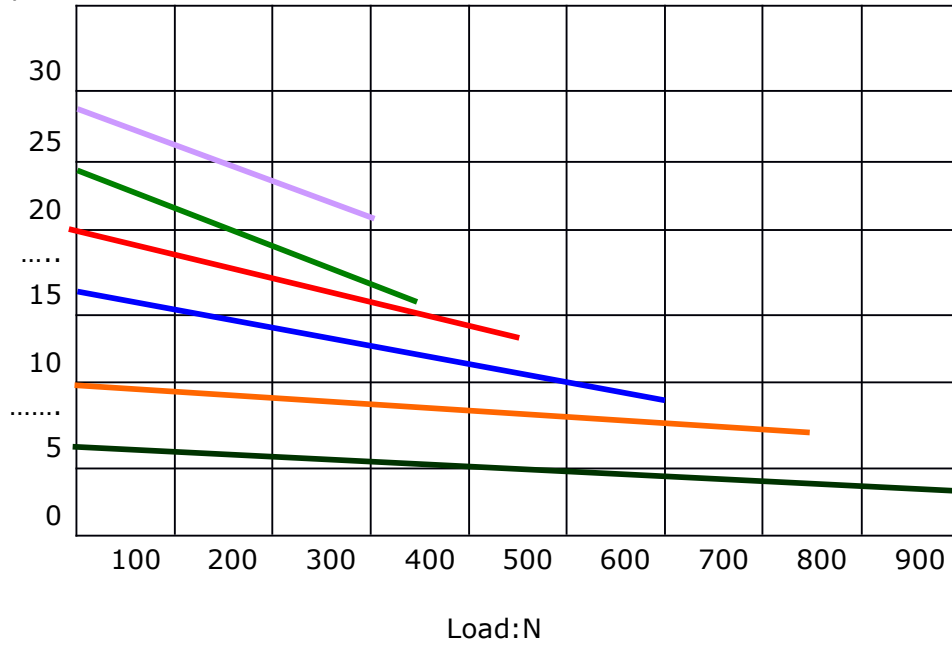
Drawing:



Speed vs. Load

P5H--6 P5H--10 P5H--16
P5H--20 P5H--24 P5H--29

Speed:mm/s 12/24VDC

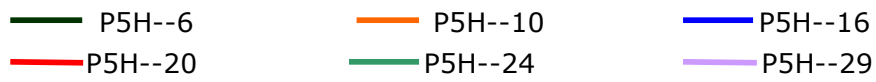
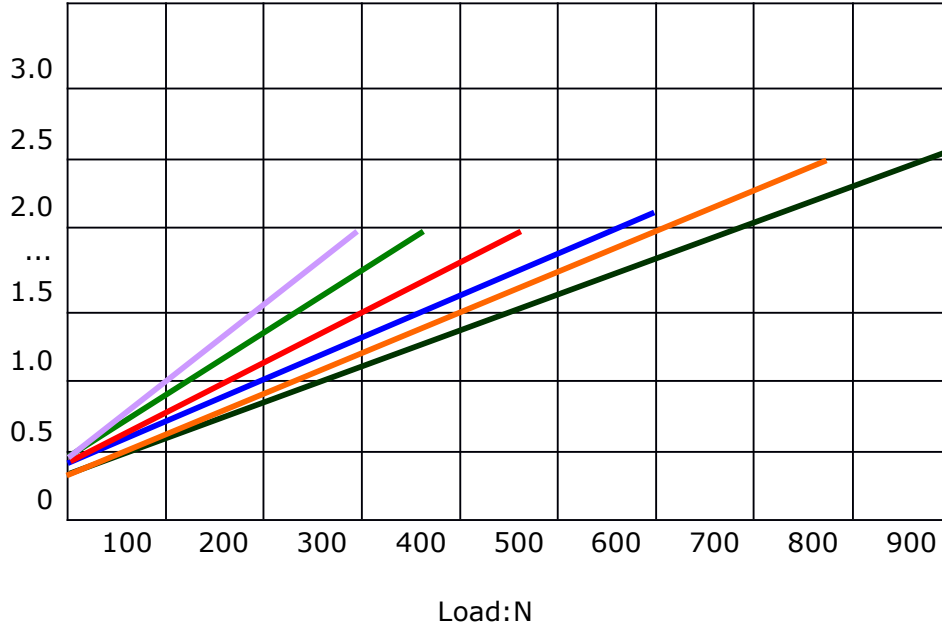


WWW.SINOKOKO.COM

Current vs. Load



Current:A 24VDC



Current:A 12VDC

