

PCR Automation is a software **simple to use**.

It works immediately **without the need for any programming**.

Phidgets interfaces compatible with the **1018, 1070 and 1072** (more in development).

Several interfaces can be open simultaneously, each in a different window.

Each input / output can be customized (label, sensor, offset, units, sensitivity, recording ...)

The log files can be automatically sent by E-mail

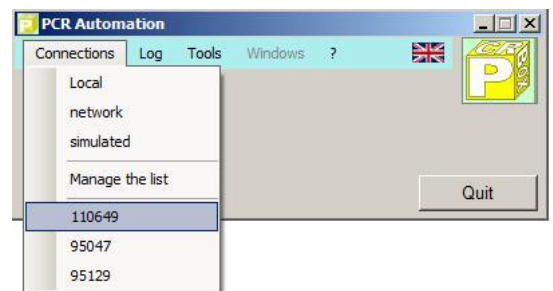
Ability to create and **add their own sensors** to the library of thirty Phidgets sensors

Runs on XP, Vista, 7 (32 and 64bit)

A test interface Phidgets 1070 (serial number 110649) can be accessed 24/24 for testing full-scale ...

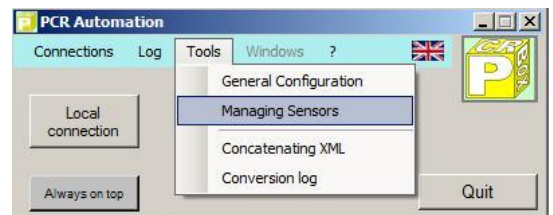
Main Window

- Connect an interface on a USB interface
- Connect an interface via the Internet (or LAN)
- Simulate a connection to test functions
- Manage the list of interfaces to set address and password
- View log files recorded



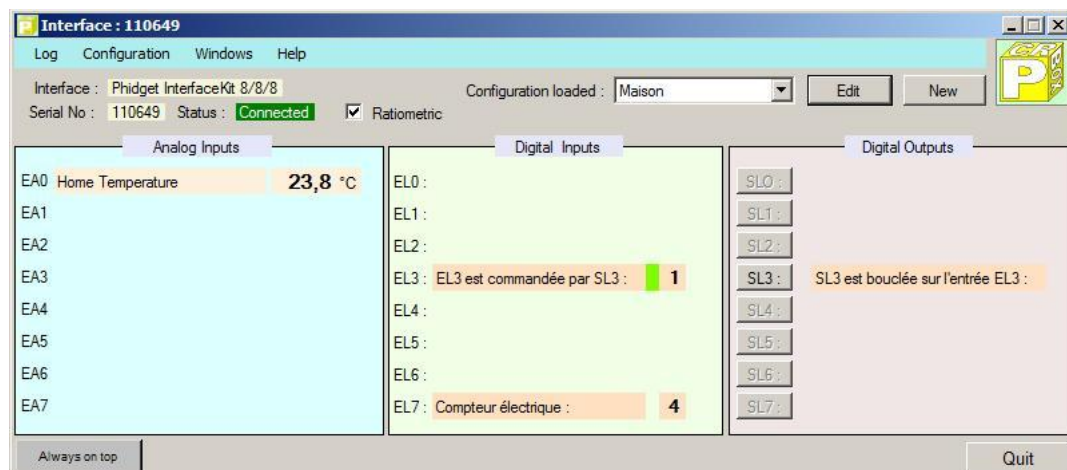
It also

- Configure the general parameters of the application
- Open the sensor management
- Concatenate XML files (log files or not)
- Convert log files as an hourly average (Chart)
- Switch to one of the windows open interfaces



Interface Window

- Viewing 8 analog channels
- Viewing 8 digital inputs
- Viewing 8 outputs
- Operate a logic output
- Configure each input / output
- Manage configurations
- View log current
- Start recording log
- Switch to another window



Channels Configuration Window

For each channel :

- On or off (display or not)
- Enter the text of your choice
- Indicate the sensor connected to this channel
- Record in the log file
- Indication of the gross value delivered by the sensor
- Shift + or - to catch the errors of the sensor (offset)
- Level of sensitivity of the sensor, sending threshold value

Channel configuration

Name of the config : Maison

Channel type : EA Analog Input

Channel number : 0 Activated :

Channel wording : House temperature

Sensor : Ph1124

Registered :

Gross value : 382

Offset : 0

Computed value : 23.8

Sensitivity : 2

Record Quit

Managing Sensors Window

For each sensor :

- Sensor System or not (automatic)
- Enter the text of your choice
- A value of the conversion formula ($Y = A * X + B$)
- B value of the conversion formula ($Y = A * X + B$)
- Wording of the unit to the sensor
- Abbreviated wording of the unit

Managing Sensors

Sensor : Ph1124 System

Wording : Sensor of Temperature Phidgets 1124

Channel type : EA

A : 0.2222

B : -61.111

Unit provides : Degré

Unit abbreviated : °C

Y = A * X + B

Create Record Delete Quit

List of connections

- Automatic entry to the first connection
- Assigning a configuration
- Ratiometric sensors or not
- Local connection or network
- Internet address of the interface
- Port number of the interface
- Password Interface

Serial No.	Configuration	Ratiometric	Local	IP address	N° Port	Password
110649	Maison	<input checked="" type="checkbox"/>	<input type="checkbox"/>	pcrbox.dyndns.org	5001	mdp
95047	Initiale	<input checked="" type="checkbox"/>	<input checked="" type="checkbox"/>			
95129	Initiale	<input checked="" type="checkbox"/>	<input checked="" type="checkbox"/>			

Create Delete Record Quit

Application Configuration

- E-mail address of the sender of the message
- E-mail address of the message
- Coordinate entry of SMTP server
- Ability to send an immediate e-mail test
- Enable sending log files by e-mail
- Enable sending a test message periodically
- Number of minutes between periodic tests
- Maximum size of the log file before creating another

Application Configuration

Mail addresses | Log file

From Address : From_me@fai.fr

Address To : To_you@fai.fr

Smt server : smtp.fai.fr

Send a test message

Active message sending : (Sending of log files per message)

Periodic test messages : Period (in minutes) : 60

Registration is automatic and immediate consideration

Close